

---

*June 2011  
Volume 4, Issue 6  
Published monthly  
Articles are due 15th of the  
month preceding publication  
office@gracelutheran1.org*

---

Grace Lutheran Church  
(ELCA)  
**ALL MAIL TO: PO Box 425**  
**FIND US:** 6000 Broadway St  
Richmond, IL 60071  
Church Office: 815-678-3082  
Fax: 815-678-2123  
www.gracelutheran1.org

# Message of Grace

## Large Print Version



**Get on our email list.** Send an email to [office@gracelutheran1.org](mailto:office@gracelutheran1.org) to let Sue know you want to be added to the list.

## God is Faithful

When you receive this message, notice will have been given of a Special Congregational meeting for the purpose of the congregation's consideration of a candidate to fill the Office of Pastor at Grace.

It has taken more time than anticipated and lots of work by the Call Committee and Congregation Council to reach this point.

From the outset of the Transition Time, I have reminded us that God's choice for a resident pastor was already in place and at the right time it would be revealed. The discernment of committee, council and voting members of the congregation will be the affirmation of God's choice.

When the resident pastor has been entrusted with the Office of Word and Sacrament in this place, the members of Grace will have experienced 3 transitions in the process. 1st was the transition of the pastor retiring, the 2nd transition has been the in-between-time. Now the 3rd transition will be the welcoming of a new pastor who is coming along side Grace to give leadership to the mission God has entrusted to the Church at Grace.

As a new chapter unfolds in the life of Grace, it will be so important to remember that God continues to be faithful just as God has been faithful through the 72 years of ministry here. I'm reminded of a story of two scientists who were on a field trip in the mountains. They

discovered a baby eagle in a nest on a jutting rock, just below the top of a dangerous cliff. The eaglet had been deserted, and the scientists wanted to rescue it. They asked the young son of their guide if they could lower him on a rope to fetch the little bird.

The boy was less than enthusiastic about their plan, so he declined. They offered him money, and then doubled it, but still the boy refused. Finally, one of the scientists asked with a sense of helplessness, “Well, then, how do you propose that we save the baby eagle?” The mountain boy replied: “I’d be glad to go down to rescue the bird for free if you’ll let my dad hold the rope.”

And that is what all of us—you, me, all us---need to be reminded to do. We need to let our Heavenly Father, hold the rope for our life. As we move on and give thanks for what has been and rejoice in what will be. It is important to steadfastly remind ourselves that God continues to be faithful. God will not go back on his promise. God really can be trusted. During this Easter season I invited you pray this prayer: *“By your word, eternal God, your creation sprang forth, and we were given the breath of life. By your word, eternal God, death is overcome, Christ is raised from the tomb, and we are given new life in the power of your Spirit. May we boldly proclaim this good news in our words and our deeds, rejoicing always in your powerful presence; through Jesus Christ, our risen Lord, Amen—let it be so.”*

*Dr. Rob*

## From the Council President

June is looking to be a busy month for Grace Church. On June 5<sup>th</sup>, we will be meeting the candidate for the position of resident pastor. We plan to meet for a short devotional discussion after the church service on that day. He will take questions from the congregation before we discuss and vote on whether to extend a call offer to him. Light food and child care provided.

On June 19<sup>th</sup>, we will welcome Gladys Mungo back to Grace. Gladys is a missionary in Haiti that Grace has been helping to support for several years. She is instrumental in our children's food program and our efforts to rebuild the Lutheran Church in Plen Matin. We will get an update of the Plen Matin Church and our other ministries in Haiti.

The last Sunday of June, the 26<sup>th</sup>, will be the date of our semi-annual congregational meeting. At that time, we will get a report from our church council and from several church committees. The meeting will have the elections of new council members. Over half of our church council will be elected at this meeting and will serve the congregation for a two year term. June appears to be an exciting time for the future ministries of Grace.

*Jon Petersen*

## The Seven Practices of Faithful Discipleship



**Encourage** → **Teaching/Mentoring** → **Pass on the Faith**

### Encourage

Disciples are not born mature; in reality, many disciples never grow beyond the infancy stage of their relationship with Christ. Inherent to the journey of discipleship is the



ongoing call to mature in faith. Growth in faith happens as we are mentored and as we mentor and encourage others. Christian education is the more formal way children of God are disciplined in their faith. Mentoring relationships are a less “institutional” way the building of faith happens as more mature disciples become “stewards of the mysteries of faith” with seekers. Encouragement happens between more seasoned disciples and those growing, between friends at similar points in their journey encouraging each other to growth, between key teachers such as pastors and congregational leaders and students of the faith. In this process of exchange it is not only the learner who grows, but the one who mentors and teaches. The maturing disciple knows she is never finished; that the path of maturity continues to the day we exchange this life for the next. A biblical model for this process can be Philip and the Ethiopian Eunuch (Acts 8).

*Part of the disciple's job description is to pass on the faith.*

<http://archive.elca.org/init/teachthefaith/7practices.html>

## From the Outreach Team



The **Outreach Cafe** is serving breakfast on the fourth Sunday each month. In June **we will be serving on the 26<sup>th</sup>** from 10:00 to 11:30. Proceeds benefit PADS and our local food pantries as well as Habitat for Humanity. We will gratefully accept any donations of breakfast food or volunteer labor. See Tina to arrange to serve.

### **"A Brush with Kindness" program helps with home upkeep**

If you are interested in receiving help or in giving help, please contact Habitat for Humanity at 815-759-9051 or e-mail at [habitat1@mc.net](mailto:habitat1@mc.net).

**Habitat for Humanity is accepting applications for families to be recipients of one of two houses being built this year in Marengo.**

Interested persons should go to [www.habitatmchenry.org](http://www.habitatmchenry.org) or call the office at (815) 759-9002 for details.

**Nursery Services are available during the 9:00 Sunday services: Parents and other interested parties are invited to sign up to serve in the nursery a few times each year. Contact Carolyn Bolman at 815-675-0471.**

**P.A.D.S.** Provides food and shelter to the homeless. Thanks for all the help this year! To volunteer, see Curt Bjorklund, email him at [chbjorklund@hotmail.com](mailto:chbjorklund@hotmail.com) or call 815-529-7746.

*Outreach Contact: Tina Peterson, 815-678-4335, [tinap59@hotmail.com](mailto:tinap59@hotmail.com)*

## RINGS Youth Ministry Volunteer to Feed Starving Children

### Upcoming RINGS Events Can

- **June 11 Feed My Starving Children, Schaumburg!** We have 2 options for this. We can work from 2:00 to 4:00 or from 4:30 to 6:30. We'll need to leave Redeemer an hour and a half before our shift. I know this is a super-busy time with graduation parties and sports, so please let Pastor Sarah (815-236-5087) or Pastor Tom (815-236-9411) know asap which shift is better for you. If we don't show up, kids don't get fed. Dinner afterwards!
- For those going on the MISSION TRIP: Keep your ears open for a date when we'll get together to discuss the final details of the trip. Remember, we leave early on July 30 and return late on August 6!

*Grace Contact: Carol Jean Steadman, [kate@stans.com](mailto:kate@stans.com) or call 815-338-0490*

## Needs and the Need for Service Don't Take a Vacation

As you all know, the summer months represent many activities put on hold until the fall. It is very important for us to be ever mindful that hunger, homelessness and sickness is never put 'on hold'. These conditions exist 24 hours a day 7 days a week with no holidays or

vacation time. Please continue your prayers and share your bounty with those who need our help.

The same is true of our military personnel who are serving 24/7. We are being protected round the clock by men and women whose duty it is to protect us and our freedoms which we all enjoy. Please remember those who serve and who have served their country so valiantly, some with their lives. God Bless our military and their families. God bless America!

It is easy for some to always think they are the ones volunteering, making and preparing food, giving of their time and resources but when you stop and realize how many people it takes for our church to keep the wheels in motion, you know so many of your fellow members are involved in some way with keeping our beautiful church alive and functioning. Gifts come in many forms and shapes. Say **YES** when you are asked to give of yourself.

## News from Women of the ELCA (WELCA)

There will be a special meeting called for the WELCA women's group so they may discuss and vote on what projects they wish to help fund. There are some special funding projects that Bob Ketelsen, property committee chairman, has just brought to the attention of Carol Heuer, one of the Presidents of WELCA. A carryover from last year is #1 -

- 1) New fireplace chimney cap of stainless steel instead of last year's proposal of concrete - at a lower cost of \$560.00
- 2) Recover damaged Fellowship Hall chair bottoms – approximately 2 dozen at \$10.00 per chair - \$240.00
- 3) Repair parking lot and driveway pot holes – cost approximately \$9,127 - Daycare to fund \$4,000 remaining is a cost of \$5,127.
- 4) Install carpet over sanctuary floor tile – cost \$10,000 - \$13,000 – funding requirements for this project will have to be deferred until a later date

WELCA raises money so that projects such as those mentioned above may be funded. The results of the funding will be listed in the July newsletter.

Getting back to the **salad luncheon**, the comments from various churches and guests has been so favorable that women want to sign up for next year. (that will have to wait a while) The table prizes, the door prizes and the raffle were such a plus, along with the vendors who handmade all their items for sale. If you were not able to come this year, you will not want to miss it next year. The figures are in for the Salad Luncheon showing our income of \$1,257.33 and expenses of \$425.89, giving us a profit of \$831.44.

Marie Pickering gave some handmade prayer shawls, made by Jane Brantley, for Joan Rzonca to bring to Centegra's Ministry Services for patients to use for comfort during their stay. Labels as to their being handmade and given by our church will be attached to each shawl along with a prayer.

Even though WELCA will not be meeting during July and August, we will be meeting again in **September on Monday the 12<sup>th</sup>**. (the 5<sup>th</sup> of September is Labor Day) Meetings are now held at 4:00pm at the church. Please bring your own soup, salad, sandwich or fruit. Our hostess will be Rita Popenhagen who will be serving dessert and coffee. If you need a ride to and from the meeting, please contact Carol Heuer at 815-678-7516 who will make sure you have a ride. We are always looking for new ideas and new people to come to our meeting. Won't you give us a try at our September meeting?

*WELCA Contact: Carol Heuer at 815-678-7516*

## From the Fellowship Team

The Fellowship Team would like to thank our Spring Fest Entertainers Zach Olson, Alyssa Steadman, Ray Eisbrener and Mary Stephan for sharing their talents with us. It was much appreciated and enjoyed by all.

June coffee servers are June 5<sup>th</sup>—Linda Ketelsen, June 12<sup>th</sup>-Millie Orsolini, June 19<sup>th</sup>-Rita Popenhagen, June 26<sup>th</sup>-Outreach Café. Thank you to all the volunteers that have served throughout the year. There are many opportunities to serve throughout the summer, so please sign up—the list is posted on the circular bulletin board in the Narthex.

If you have any questions, please see a member of the Fellowship Team: Bernie Schert, Doris Rockenbach, Sue Fosdal, Millie Orsolini, Linda Ketelsen, Linda Poehlein, Sue Kubic.

*Contact: Sue Kubic, 815-678-4842*

## Properties Team Report

Last month we summarized the project work and recurring maintenance activities that your property team had identified for this year. However, we recently have had to add a major cost item to the list.

Over the last two years we had communicated that many of our church mechanical systems (furnaces, water heater, etc.) were approaching their useful life and would need to be replaced in time. Unfortunately, that time has come. You may have noticed that it was rather cool in the sanctuary during Sunday services this May. After dealing with a number of furnace outages this winter, we made the decision to have all of the church furnaces and air conditioners checked and serviced. During this activity the heating and air-conditioning company discovered that the heat exchangers in 5 of our 7 church furnaces had cracks and holes in them. We were required to turn off the gas to all of these units to prevent the potential of carbon monoxide exposure. Fortunately, we “hopefully” are past our cold weather. The air conditioning for these units is functioning, so we will have cooling this summer. This will give us some time to evaluate our options for repair or replacement of each of the furnaces. We are now in the process of getting cost estimates for this work. The total costs will be substantial. Once we understand the best alternatives we will communicate the cost and plans for the repair / replacement to you.

Our goal will be to have all of the church's furnaces in good working order before fall. Hopefully, with God's help and your support, and we can move forward with this work.

*Properties Contact: Bob Ketelsen at 815-307-8052 or rllketelsen@charter.net*

### Worship and Music Team

**The Saturday evening service will NOT be held on June 4th.**

Please worship on Sunday June 5<sup>th</sup> at 9:00 am and meet our candidate for full time pastor.

**Remember to bring your non-perishable food items every Sunday and present them with the offering. We've had a very good response so far, so thank you!**

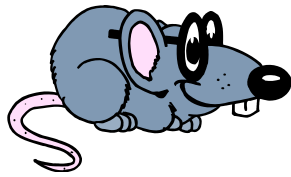
*Contact: Nancy O'Connor, koloasun@comcast.net*

### Grace Lutheran Financial Report – April 2011

Grace Lutheran

Church Income vs Expenses	<u>Income</u> <u>YTD</u>	<u>Expenses</u> <u>YTD</u>	<u>Income</u> <u>April</u>	<u>Expenses</u> <u>April</u>
<b>Budget</b>	\$84,523	\$84,523	\$21,131	\$21,131
<b>Actual</b>	\$71,049	\$72,039	\$20,203	\$19,632
<b>Over/Under</b>				
<b>Budget</b>	(\$13,474)	(\$12,484)	(\$928)	(\$1,499)
	<b>Balance 4/30/11: [\$2,290] (negative balance)</b>			

Trusting for your prayerful support and faithfulness.



## Bits and Pieces from The New Church Mouse

*Hello Friends, Nice to see everybody out and about as the days are getting warmer. Speaking of warmer days approaching, I am going on vacation for the months of July and August. I am going someplace warm where the sand will be between my little toes and I'll be needing sunglasses. I will be back in September because by then I'll be missing you.*

*I overheard that the giving of the **non-perishable foods** has been very generous. It helps support the local food pantries. They are planning on continuing the donations through the month of June. Even though I can't get into any of the items, at least it is helping others to fill their tummies!!*

*Someone told me that the **Young at Heart Group** will be meeting at church on **Thursday, June 2nd** at 11:15 am with lunch being served at 11:30 am. Cheryle Walls will be making roast pork, mashed potatoes, and gravy with the trimmings. They will be playing games for entertainment. I can't wait for this day to come – it will be a lot of fun with good friends, food and games. Remember...the Young at Heart Group **DOES MEET** in June, August and September. **There is no meeting in July.** If you have any questions, please contact Carol Heuer at 815-678-7516 or Doris Rockenbach at 262-248-0577.*

*The Easter Breakfast was a success with 115 in attendance. We were able to donate \$500 to the Food Pantries and PADS, plus matching funds from Thrivent. It is always a good feeling to help others in need. It warms my heart.*

*Keep the people serving in the military in your prayers as well as their families. They need all of our support.*

*Have a fun and safe summer. I'll see you in September and I hope I don't get my tail sunburned!!*

**Praise Report.** The Adopt-A-Garden group would like to give a big thanks to Jim Nor for the mulch that he donated to our church. All of the gardeners truly appreciate his generosity as we will now have a weed free and uniform look in all of our areas!

June 2011						
SUN	MON	TUE	WED	THU	FRI	SAT
<b>NO Saturday Worship service June 4<sup>th</sup></b> <b>Food Offering:</b> We ask that each family bring 1 item of non-perishable food to the altar during the offering.			1	2 <b>11:15 am</b> Young at Heart	3	4 NO Worship tonight
5 <b>9:00 am</b> Holy Communion Service <b>10:00 am Meet &amp; Greet Pastor Candidate</b>	6 <b>4:00 pm</b> WELCA	7 <b>7:00 pm</b> Council Meeting	8	9	10	11
12 <b>9:00 am</b> Holy Communion Service <b>10:15</b> Adult Study	12	13	15 Newslett er article deadline	16	17 <b>Synod Assembly</b>	18 <b>Synod Assembly</b>
19 <b>9:00 am</b> Holy Communion Service <b>10:15</b> Adult Study	20	21	22	23	24	25
26 <b>9:00 am</b> Holy Communion Service <b>10-11:00 am</b> Outreach Café <b>10:30 am</b> Congregational Mtg & Council Elections	27	28	29	30	If you are interested in being a voting delegate to the annual Synod Assembly, June 17-18, notify Jon Petersen. We can send 3 delegates plus one youth or young adult. <a href="http://www.nisynod.org">www.nisynod.org</a> for more information.	
Don't forget that the <b>Nursery is now open</b> during the 9:00 service.						

<b>WORSHIP VOLUNTEER SCHEDULE JUNE 2011</b>			
<b>Position</b>	<b>June 5 - 9:00</b>	<b>June 12 - 9:00</b>	<b>Altar Guild</b>
<b>Lector:</b>	Mark Greenleaf	Dave Baker	Nancy Kepple Carol Steadman Margaret Smith
<b>Assistant:</b>	Dave Popenhagen	Andy Mayer	
<b>Computer:</b>	Chris Bjorklund	Art Stoike	
<b>Counters:</b>	Chris Bjorklund & Deb Oelert	Ron and Sue Chandler	
<b>Acolytes:</b>	Michael Borst Chase Woods	Jarod Lemke Anna Blaney	
<b>Ushers:</b>	Bayer Family Marty & Jan Heynis	Bob & Linda Ketelson Wagner Family	
<b>Position</b>	<b>June 19 - 9:00</b>	<b>June 26 - 9:00</b>	
<b>Lector:</b>	Dave Nor	Kim Bokan	
<b>Assistant:</b>	Nancy O'Connor	Sandy Messick	
<b>Computer:</b>	Linda Poehlein	Ken Lapinski	
<b>Counters:</b>	Edel Ervin and Sandy	Edel Ervin and Pat	
<b>Acolytes:</b>	Steven Coutteau Cody Harren	Sarah Bassett Rachael Hayden	
<b>Ushers:</b>	Carol Heuer, Tom Ott, Joe Steadman	Gary & Stephanie Haley, Rick Rzonca	

**Visit our Website:** [www.gracelutheran1.org](http://www.gracelutheran1.org) Click on Member Directory to look up member photos, phone numbers and addresses. Password: martin

Sunday Services & Activities  
 ★★★★★★★★★★★★  
 Service at 9:00 am  
 Adult Bible Study 10:15  
 Coffee & Fellowship: 10:00 am