

---

January 2012  
Volume 5, Issue 1

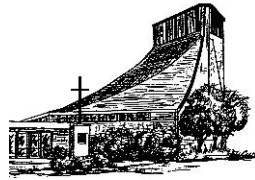
Published monthly  
Articles are due 15th of the  
month preceding publication  
office@gracelutheran1.org

---

Grace Lutheran Church (ELCA)  
ALL MAIL TO: PO Box 425  
FIND US: 6000 Broadway St  
Richmond, IL 60071  
Church Office: 815-678-3082  
Fax: 815-678-2123  
www.gracelutheran1.org

# Message of Grace

Large Print Version



**Get on our email list.** Send an email to [office@gracelutheran1.org](mailto:office@gracelutheran1.org) to let Sue know you want to be added to the list.

## God's Plan for 2012

*"Do not remember the former things, or consider the things of old. I am about to do a new thing; now it springs forth, do you not perceive it? I will make a way in the wilderness and rivers in the desert."*

*-Isaiah 43:18-19*

A new year, for many of us, means a new start. We reminisce on the things that have happened this past year and we wonder what might happen in 2012. A new year is to take stock of where we have been and where we are going. Traditionally many of us make New Year resolutions. These are often goals for us to improve our lives. For some of us we might seek to improve our health through exercise. Others might want to reconnect or create deeper relationship with friends and family. All of us desire a fresh start and a new perspective from time to time.

The above verses remind us that as we create our own resolutions God has plans for us. God wants to do a new thing through us. I think sometimes we believe that God is done working through us. That our best days are behind us. But God does not forget us and God is never done working through us. This day and this year God wants to do a new thing through all of us. God wants to bring something new and meaningful into our lives. The wonderful thing is that this new thing is different for all of us. For some of us God might form a new friendship

in our lives. For others God might help us cultivate a new career. For all of us God is calling us to enter deeper into His mission and ministry.

As you plan and dream for 2012 know that God has plans for you. One of the ways to discover those plans is through this congregation. Here you will find a community of people seeking to more fully realize their place in the body of Christ. We are by no means a perfect place, but we are a place in which the Holy Spirit is alive and at work. I invite you to prayerfully consider how God might want to do a new thing in your life this year.



In Christ

*Pastor Andy*

---

## STEWARDSHIP MINISTRY

The Council accepted the Stewardship Committee's proposal to print the previous week's attendance and giving in the bulletin. Each week we will include a Bible verse pertaining to giving. Early in the month, the total expenditures and giving for the previous month will also be printed in the bulletin. A financial report on the status of the congregation's finances will be included with the quarterly giving statement we already receive. Look for this to begin soon.

We would like to thank Cheryl Walls for the time and effort she has put into organizing the new counters schedule. It is a large task and she done a great job!

*Stewardship Contact: Carol Jean Steadman [kate@stans.com](mailto:kate@stans.com) or 815-338-0490*

## PROPERTY TEAM REPORT

Once again this year we (together) accomplished a great deal of repair work and improvements to our church building and grounds. We have come a long way toward addressing some long-needed repairs on our church home and making our church grounds more beautiful. I want to thank the members of the Property Committee and all of the volunteers that helped with the various projects and ongoing maintenance. I also want to thank WELCA for their financial support on so many of the projects. Without their help we would not have been able to accomplish what we have over the past 2 1/2 years.

We want to thank everyone that indicated their willingness on the Time and Talents sheets to assist with our various church property activities next year. We really appreciate your desire to join us in our efforts to keep our church property and grounds well maintained and looking good.

Over the winter, your Property Committee will be planning the project and maintenance work that we will be undertaking this next spring and summer. We are also building a recurring maintenance list for the church building and grounds to make sure we have an orderly process to capture and accomplish all maintenance activities that need to be done each month throughout the year. We will be advising all the property volunteers after the first of the year to let you know the activities we are planning for next year and asking for their assistance based on the areas of interest they indicated on the Time and Talents sheets.

*Properties Contact: Bob Ketelsen at 815-307-8052 or [rlketelsen@charter.net](mailto:rlketelsen@charter.net)*

James LeJeune and team take a well-deserved break from their landscaping project at the Broadway entrance. Great job!



## Grace Lutheran Youth Group Collecting Aluminum

The Youth Group meets the second Thursday of the month at 5:30. In December we had a Christmas party, ate pizza, made gingerbread houses and played some games. In January we'll begin **collecting aluminum to raise money for the Youth Gathering** next summer. Please start saving your cans now and we'll have a spot to collect them at church soon.

Thanks for your help!

Youth Contact: Dave Borst [dborst30@sbcglobal.net](mailto:dborst30@sbcglobal.net), 815-385-6113

## From the Outreach Team



The **Outreach Cafe** serves breakfast on the fourth Sunday each month to raise money for our local food pantries, Habitat for Humanity and Haiti. The Church Mouse has the details, but 2011 was a great year for the Café. Thanks to everyone who donates food and energy to prepare for it each month, and of course, thanks to all of you who come and EAT and give generously. On January 22<sup>nd</sup> Tina and Dean will host an **International Café** to celebrate the heritage of our congregation. If you have a special dish

that is part of YOUR heritage, consider sharing it at this special Café. A sign-up sheet is at the ministry table in the Narthex.

Christmas caroling on December 4<sup>th</sup> was a big success. With just six carolers we canvassed a neighborhood in Genoa City and distributed 50 bags of cookies along with a schedule of Christmas services.

Thanks to all the carolers and cookie-bakers! We hope some of those whose homes we visited will join us. This was a pre-cursor to the door-to-door canvassing we are planning for spring. If you want to be part of the team, let Chris Bjorklund or Pastor Andy know. We'll have informational meetings in February or early March and hope to venture out for the first time before Easter (April 8<sup>th</sup> in 2012).

Please remember the food pantry!

To donate or volunteer to serve for **PADS** January 5<sup>th</sup> or February 2<sup>nd</sup> see Curt Bjorklund, email him at [chbjorklund@hotmail.com](mailto:chbjorklund@hotmail.com) or call 815-529-7746.

*Outreach Contact: Chris Bjorklund [dreamstar\\_00@msn.com](mailto:dreamstar_00@msn.com), 815-675-2765*

## January 8<sup>th</sup> Marks Grace's Seventy-Third Anniversary

"The first service of what was to become Grace Lutheran Church was conducted on June 18, 1938 in Acacia Masonic Hall...The church roll was opened for the signing of charter members. About 100 persons attended the service with the total offering amounting to \$16.03. The formal organization took place on January 8, 1939 with 61 charter members. "

*50<sup>th</sup> Anniversary Jubilee History Book*

We are grateful for the past...we celebrate the present...they shape our future as servants of Christ.

## News from Women of the ELCA (WELCA)

Discussion and plans are being finalized for the beginning of the year. We must be mindful in our planning of events not to conflict with other committees planning and setting dates for their functions. We all try to work with each other in this regard.

The success of our annual Spring Luncheon over the past few years has commanded a repeat of this event. It seems each year it is well attended by our members and their friends. To say the least, it has been a very successful ecumenical event. Plans are for mid-to-late April. More details will be forthcoming in our next newsletter.

The chairs in our Community Hall have been repaired and are back in service. This is the second time some of our chairs have been repaired and, therefore, are asking that care be demonstrated when stacking these chairs. WELCA has agreed to fund the cost of this repair as the last funded project for the past year 2011.

Our next meeting will be held at the home of Marie Pickering on Monday, January 9<sup>th</sup> at 4:00pm. As in the past, Marie has kept her traditional Christmas decorations up for our meeting so that all may enjoy this wonderful Holy Season and all that it means to each and every one of us. Please bring your own soup, salad, sandwich or fruit. Our hostess will be providing her delicious desserts and beverage. All women members of our church are welcome at our meetings. We would love to have you join us. If you need a ride to and from Marie's, please contact Carol Heuer at 815-678-7516 and she will arrange a ride for you.

*WELCA Contact: Carol Heuer at 815-678-7516*

## Praise Reports

Thanks for the new Bulletin Board which hangs on the wall above the new Ministry Table. The sign was made by Brenda Blakeman from our Day Care and the frame was refinished by Sue Kubic. Clipboards for signing up for a particular event are all available there.

Thanks to Carmen Hosken and the Sunday school teachers for the wonderful Christmas program the children presented during the late service on December 18<sup>th</sup>. It is always a joy to see the children of Grace perform. A lot of hard work, time and practice went into putting this all together and we do 'thank all of you'

## Did You Know...

That your church has many unsung heroes who go about their duties – giving of their time, knowledge and resources who quietly go about their work and never expect anything in return. These are truly the Lord's people who know he is with them always.

Also, most of the committees of the church provide an event or on ongoing service that benefits our congregation or organizations outside our church home. Some ask for a small donation or, a donation toward a particular project or fund. This is outside your regular offering. These committees function through your donations to provide the services we all enjoy and money raised should cover expenses. Committees need your support in order to continue providing services. They are self-funded and your donations help to keep them ongoing. **Please sign up for a commitment to serve.**

## Fellowship Committee Offers Baked Potato Bar Jan 8th

We are starting the **New Year** with new ideas that bring us all together as a Congregation in Fellowship. For starters, we are set for a **Baked Potato Bar** on January 8<sup>th</sup> after the late service in Fellowship Hall. It will include some 9 dressings and toppings to choose from. A \$5.00, per potato, minimum donation will be requested. A light dessert and beverage will be included. There is a signup sheet provided on the Ministry Table for your name and the number of people attending.

We have been discussing the Lenten season and if we will be a part of the pre-Wednesday evening services. As plans for other events are scheduled, you will be notified via this newsletter, our Sunday bulletin or the audio/visual in the Sanctuary.

*Contact: Doris Rockenbach 262-248-0577*

---

**Remember** – Continue saving the pull tabs from your cans – Also, the Sentry receipts with the ‘Funds for Friends’ sticker on the receipt. Also, we are still collecting can goods and staples in the basket up by the altar and in the basket under the table in the hallway to the office. Always remember those who are less fortunate.

Remember our shut ins and those recovering from an illness or recent surgery. A welcome card or call or visit can do wonders in time of need and sorrow.

Our service men and women need our prayers for wherever their tour of duty takes them. Many are returning home but many are still away from family and loved ones. Prayers for them and their families should be ongoing as their sacrifices are for the freedoms we enjoy and hold so dear. **GOD BLESS AMERICA**

## Council Meeting Notes December 13, 2011

Pastor Andy reported the audit team will consist of Shannon Borst and Sue Dubs. The audit team will independently begin working this month, and the report will be ready by 1/15/12.

Pastor Andy shared a letter from Bishop Wollersheim stating 2012 is the 25<sup>th</sup> anniversary of the Synod. Bishop Wollersheim is asking for all churches to submit events, facts, pictures of the church, etc. as part of the celebration. Pastor Andy said the Communications team will handle it.

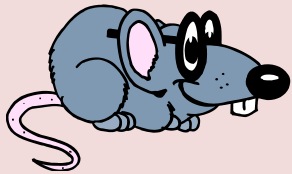
The main order of business was to work on the draft of the budget to be presented to the congregation December 18<sup>th</sup> for review. The final draft will be available January 15<sup>th</sup>. The next council meeting will be held January 10<sup>th</sup> at 7:00 pm. The proposed 2012-13 budget will be finalized and made available to the congregation on January 15<sup>th</sup> so they have time to look it over before the congregational meeting January 22<sup>nd</sup>. Joint team meetings are January 3<sup>rd</sup> at 6:30 pm.

## Grace Lutheran Financial Report – November 2011

Income vs Expenses	<u>Income YTD</u>	<u>Expenses YTD</u>	<u>Income Nov</u>	<u>Expenses Nov</u>
<b>Budget</b>	\$253,569	\$253,569	\$21,131	\$21,131
<b>Actual</b>	\$218,736	\$218,669	\$22,674	\$20,649
<b>Over/Under Budget</b>	(\$34,833)	(\$34,900)	\$1,543	(\$482)
<b>Balance 11/30/11: [\$1,232] (negative balance)</b>				

<b>WORSHIP VOLUNTEER SCHEDULE JANUARY 2012</b>				
<b>Position</b>	<b>Jan 1 - 10:00 (Single Service)</b>		<b>Jan 8– 8:00</b>	<b>Jan 8 – 10:15</b>
<b>Lector</b>	Kim Schmidt		Michelle Bayer	Joe Steadman
<b>Assistant:</b>	Sandy Messick		Nancy O'Connor	Dave Oelert
<b>Computer</b>	Denise Lemke		Phil Giannini	Katie Arizzi
<b>Acolytes</b>	Dalton Wagner		Cameron Barry Blaine Bayer	Rachael Hayden Megan Grant
<b>Counters</b>	Donnie & Colleen Vineyard		Chris Bjorklund & Marty Heynis	
<b>Ushers</b>			Dave Nelson Tom Ott	Bob & Linda Ketelsen
<b>Greeters</b>			Joan Ehorn Ann Katzenberg	Katie Arizzi Terri Cooke
<b>Position</b>	<b>Jan 15 – 8:00</b>	<b>Jan 15 – 10:15</b>	<b>Jan 22 – 8:00</b>	<b>Jan 22 – 10:15</b>
<b>Lector</b>	Buzz Pickering	Pat Petersen	Dave Nor	Elise Livingston
<b>Assistant:</b>	Sue Dubs	Jon Petersen	Dave Popenhagen	Kelly Steadman
<b>Computer</b>	Marty Heynis	Chris Bjorklund	Tom Ott	Art Stoike
<b>Acolytes</b>	Anna Carlson Dalton Wagner	Will Marshall Reed Marshall	Allison Lindley Cody Harren	Liam Schmidt Daniel Spencer
<b>Counters:</b>	Sandy Messick and Deb Oelert		Ron & Sue Chandler	
<b>Ushers</b>	Bayer Family	Dave & Shannon Borst	Wagner Family	Kim Bokan and Brian Morris
<b>Greeters</b>	Carol Jean & Ron Steadman	Terri Cooke	Wagner Family	Mildred Orsolini Doris Rockenbach
<b>Position</b>	<b>Jan 29 – 8:00</b>	<b>Jan 29 – 10:15</b>	<b>Altar Guild for January</b> Carol Heuer Jane Abramson Jan Heynis	
<b>Lector</b>	Rita Popenhagen	Mark Greenleaf		
<b>Assistant:</b>	Tom Weaver	Clark Atwater		
<b>Computer</b>	Ken Lapinski	Linda Poehlein		
<b>Acolytes</b>	Sandy Schenk Tiana Obara	Alex Hosken Tyler Bassett		
<b>Counters:</b>	Donnie & Colleen Vineyard			
<b>Ushers</b>	Marty & Jan Heynis	Carol Heuer Chuck Simmerman		
<b>Greeters</b>	Gerry Soulak Glenn Svenson	Art Stoike Andrea Tyrrell		

January 2012						
SUN	MON	TUE	WED	THU	FRI	SAT
1 <b>10:00 am</b> Holy Communion Service	2	3 <b>6:30 pm</b> Joint Committee Meeting	4 <b>5:30 pm</b> ALPHA <b>7:00pm</b> Choir rehearsal	5 <b>No Young at Heart</b>	6	7
8 <b>8:00 am</b> Holy Communion Service <b>9:15 am</b> Sunday Sch <b>10:15 am</b> Holy Communion Service <b>11:15 am</b> Baked Potato Bar	9 <b>4:00 pm</b> WELCA at Marie Pickering's home	10 <b>7:00 pm</b> Council Meeting	11 <b>5:30 pm</b> ALPHA	12 <b>5:30 pm</b> Youth Group	13 Newsletter article deadline	14
15 <b>8:00 am</b> Holy Communion Service <b>9:15 am</b> Sunday Sch <b>10:15 am</b> Holy Communion Service	16	17	18 <b>5:30 pm</b> ALPHA <b>7:00pm</b> Choir rehearsal	19	20	21
22 <b>8:00 am</b> Holy Communion Service <b>8:45-10:30 am</b> Outreach Café <b>10:15 am</b> Holy Communion Service <b>11:30 am</b> Annual Congregational Meeting	23	24	25 <b>5:30 pm</b> ALPHA <b>7:00pm</b> Choir rehearsal	26	27	28
29 <b>8:00 am</b> Holy Communion Service <b>9:15 am</b> Sunday Sch <b>10:15 am</b> Holy Communion Service	30	31				



### Bits and Pieces from The Church Mouse



**Happy New Year, Everyone!!** I hope you and your family have a blessed New Year in 2012. On Sunday, January 1<sup>st</sup>, 2012, New Year's Day, there is **one church service** which is at **10:00 am**. That will be so nice to start off the "new year" by attending church. I'll be there with all of my friends "praising" in the New Year!!

I heard with my big ears that Pastor Andy will be having First Communion classes starting this month. These classes are for anyone of any age. Contact Pastor Andy if you are interested.

There is **no meeting** for the month of January for the **Young at Heart Seniors**. Stay tuned for the Newsletter for the month of February so you are "in the know" of what is going on. I know I'll be staying tuned because I don't want to miss out on any crumbs that fall on the floor.

The 2011 totals for the **Outreach Café** had sales of \$2,577.00, plus we will receive \$500.00 in matching funds from Thrivent for Lutherans for a total of \$3,077.00! We donated \$644.25 to each of the following: Habitat for Humanity, the Haiti mission, PADS and the Richmond Food Pantry. Additional matching funds in the amount of \$500.00 from Thrivent for Lutherans will be divided between the Food Pantry and PADS from Thrivent. A "big thank you" to Thrivent and all who volunteered their time and talents!

Another big "thank you" to everyone who participated or volunteered for the Giving Tree for the **Salvation Army and/or the Angel Tree Prison Ministry**. It was extremely successful. Without your help, Christmas for these folks would not have been the same. Your donations for the **food pantry** are greatly appreciated. Keep the military and their families in your prayers. Praise the Lord that many of them will be home for Christmas! Even after they get home, they need all of our support and prayers.

*See you next month and stay warm!*

**Visit our Website:** [www.gracelutheran1.org](http://www.gracelutheran1.org) Click on Member Directory to look up member photos, phone numbers and addresses. Password: martin  
Look for the new directory pages coming soon!



#### Services and Classes



**Sunday Worship: Regular Services at 8 and 10:15 am**  
**Coffee & Fellowship: 9:00 am**  
**Sunday School: 9:15 am; Adult Bible Study: 9:15 am**  
**Family Hour 4<sup>th</sup> Sunday of the Month w/Outreach Café: 9:15**